

Installation Guide For Interior Infrared Camera

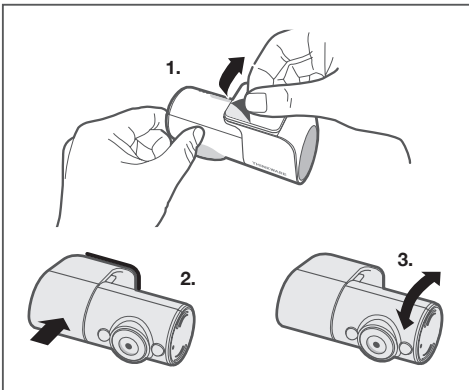


Before installing the interior infrared camera, ensure that the dash cam is off.

1. Install at any suitable location near the dash cam.
2. Ensure the following conditions are met before installation:
 - Ensure that the interior infrared camera does not obstruct the driver's view.
 - Ensure that the installation location can be easily accessed.
 - Note the interior infrared camera's direction before installation. Ensure that the BRIGADE logo on the camera mount is facing the windshield when installing to prevent the video from being recorded upside down.

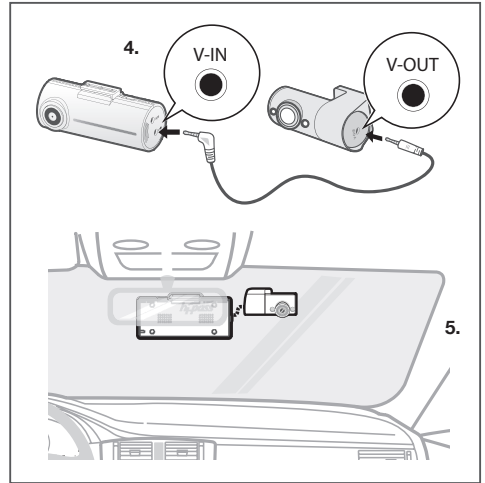
3. After selecting an installation location, clean the spot using a dry rag or cloth. If the installation surface is wet, or if foreign materials are on the surface, the interior infrared camera may not be firmly attached to the windshield and may become detached while driving.

4. Remove the protective film from the mount's installation surface (1). Make sure the BRIGADE logo on the mount is facing the windshield. Attach the interior infrared camera to the installation location and apply firm pressure to fix it to the windshield (2). Then, adjust the camera angle (3).



5. Connect the dash cam's V-IN port to the interior infrared camera's V-OUT port via the cable provided with the camera (4).

Then, route the cable neatly so that it does not obstruct the driver's view (5).



6. After installing the interior infrared camera, record a video to check if the interior infrared camera is properly installed. After the interior infrared camera is connected to the dash cam, it will turn on when the dash cam is powered on.

- The interior infrared camera is designed to work only when the connected dash cam is on. If the interior infrared camera is not working properly, turn off the dash cam and check its cable connection with the interior infrared camera.
- BRIGADE is not responsible for damages to the interior infrared camera, or to the dash cam it is connected to, caused by incorrect installation. To avoid damage due to incorrect installation, have your interior infrared camera installed by a professional at a licensed installation location.

• www.brigade-electronics.com provides various reference materials in order to assist with interior infrared camera installation. Please visit the Product Support Area of the website.

• Brigade Electronics is not responsible for damages to the main unit and/or any attached accessories due to improper user installations. Brigade Electronics strongly recommends professional automotive installation service to avoid such damages.

This device complies with part 15 of the FCC Rules.

Operation is subject to the following two conditions:

- (1) This device may not cause harmful interference, and
- (2) This device must accept any interference received, including interference that may cause undesired operation.

FCC Compliance Statement

Note: This equipment has been tested and found to comply with the limits for a Class B digital device, pursuant to part 15 of the FCC Rules.

These limits are designed to provide reasonable protection against harmful interference in a residential installation

This equipment generates, uses and can radiate radio frequency energy and, if not installed and used in accordance with the instructions, may cause harmful interference to radio communications. However, there is no guarantee that interference will not occur in a particular installation. If this equipment does cause harmful interference to radio or television reception, which can be determined by turning the equipment off and on, the user is encouraged to try to correct the interference by one or more of the following measures:

- Reorient or relocate the receiving antenna.
- Increase the separation between the equipment and receiver.
- Connect the equipment into an outlet on a circuit different from that to which the receiver is connected.
- Consult the dealer or an experienced radio/TV technician for help.

Caution: Any changes or modifications to the equipment not expressly approved by the party responsible for compliance could void your authority to operate the equipment.

Note: This unit was tested with shielded cables on the peripheral devices. Shielded cables must be used with the unit to insure compliance.

This Class B digital apparatus complies with Canadian ICES-003



Item	Standard	
Model name	DC-IR-CAM	
Camera	1Megapixel, 1/2.9" CMOS	
Resolution	HD (1280 X 720)	
Frame Rate	30 fps	
Viewing Angle	Approximately 135° (diagonally)	
Input power source	3.3V DC	
LED	IR LED 2ea	
	IR LED viewing Angle(Typ.)	45°
	IR Wavelength(Typ.)	850nm
Current Consumption	1.17W	
Operation / Storage Temperature	-10°C to 60°C / -20°C to 70°C	
Made in Korea		